



RCATS-IND

The RCATS Industrial telemetry unit builds on the core of the existing RCATS unit. It features a rugged enclosure, along with interlocking connectors.

Features:

- 1 Watt RF Data link (10+ mile range)
- Data logging via removable Secure Digital (SD) card.
- GPS 12 channel receiver
- IAS 10-290mph (higher options available)
- Altitude (0-30,000ft) (with kollsman window compensation)
- RPM (0-40,000)
- G Force +/- 8 G's (higher option available)
- Thermocouple inputs QTY 2 (0-1875 deg F)
- Internal temp (provides temperature compensation and relative temperature)



Four data inputs are available as factory configurable options. Extra fees may apply. Examples below:

- Voltage
- Current
- Outside Air Temperature
- Oil Pressure
- Oil Temperature
- Manifold Pressure (0-35in hg)
- Interfacing with engine monitors and other serial devices

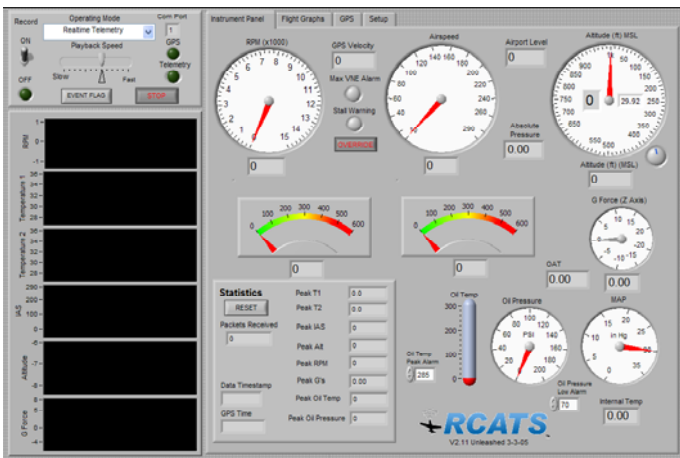


Housed in 4" x 3.75" x 1.75" aluminum enclosure with powder coated surface.

System Includes RF receiver and basic antenna (high gain antenna options available)

Applications:

- Unmanned Aerial Vehicles (UAV's)
- Experimental Aircraft
- Race Cars



(Left) Example of Experimental aircraft telemetry display utilizing MAP, Oil Pressure, Oil Temperature, and Outside Air Temperature as 4 I/O's. Custom displays are available. Call or email for details